



NAHLA PURE

info@nahlapure.com

Installation Instructions

Part #NLAP-DC-0010

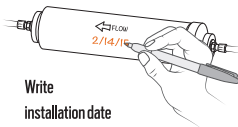
Included:



Tools required:

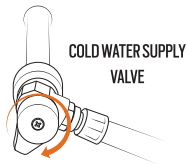


STEP 1



Write installation date

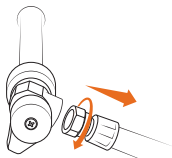
STEP 2



COLD WATER SUPPLY VALVE

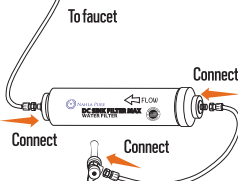
Turn off water

STEP 3



Disconnect

STEP 4



To faucet

Connect

Connect

Connect

COLD WATER SUPPLY VALVE

STEP 5

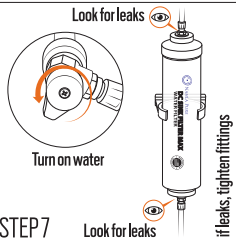
Install vertically or horizontally as desired

Attach filter to C-Clip



STEP 6

Install C-Clip to wall



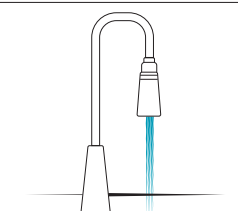
Look for leaks

Turn on water

Look for leaks

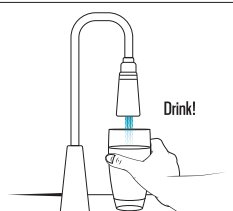
if leaks, tighten fittings

STEP 7



STEP 8

Run water until clear



Drink!

STEP 9

OTHER IMPORTANT INFORMATION

1. THIS FILTER SHOULD BE REMOVED AND DISCARDED NO LATER THAN 3 YEARS FROM DATE OF INSTALLATION (OR 10,000 GALLONS).
2. FOR USE WITH MUNICIPALLY TREATED WATER ONLY.
3. MAX RECOMMENDED FLOW RATE: 1/2 GALLON/MINUTE; MAXIMUM PRESSURE: 125 PSI.
4. USE WITH COLD WATER ONLY (MAXIMUM TEMPERATURE 120°F (48°C)). DO NOT ALLOW FILTER TO FREEZE.
5. DO NOT USE THIS PRODUCT IN ANY WAY INCONSISTENT WITH ITS LABELLING.

For questions about your filter, visit www.nahlapure.com or email info@nahlapure.com