



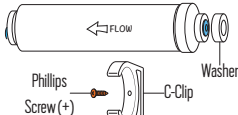
NAHLA PURE

info@nahlapure.com

Installation Instructions

Part #NLAP-R-0010

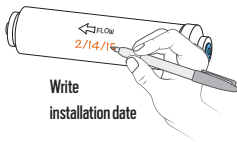
Included:



Tools needed:

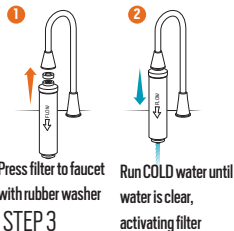


STEP 1



Write
installation date

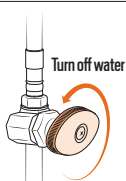
STEP 2



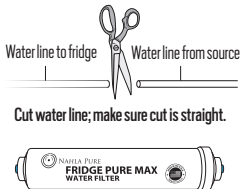
Press filter to faucet
with rubber washer

Run COLD water until
water is clear,
activating filter

STEP 3



Turn off water



Water line to fridge Water line from source

Cut water line; make sure cut is straight.



STEP 5

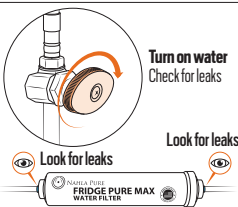


Push in water
line to fridge

Push in water line
from source

Insert tubes

STEP 6



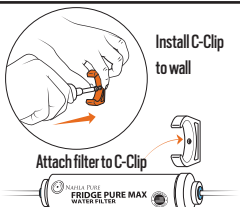
Turn on water
Check for leaks

Look for leaks



STEP 7

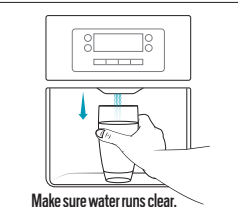
If leaking, push in tube fully for
friction seal.



Install C-Clip
to wall

Attach filter to C-Clip

STEP 8



Make sure water runs clear,
then drink!

STEP 9

OTHER IMPORTANT INFORMATION

1. THIS FILTER SHOULD BE REMOVED AND DISCARDED NO LATER THAN 3 YEARS FROM DATE OF INSTALLATION (OR 5,000 GALLONS).
2. FOR USE WITH MUNICIPALLY TREATED WATER ONLY.
3. MAX RECOMMENDED FLOW RATE: 1/2 GALLON/MINUTE; MAXIMUM PRESSURE: 125 PSI.
4. USE WITH COLD WATER ONLY (MAXIMUM TEMPERATURE 120°F (48°C)). DO NOT ALLOW FILTER TO FREEZE.
5. DO NOT USE THIS PRODUCT IN ANY WAY INCONSISTENT WITH ITS LABELLING.

For questions about your filter, visit www.nahlapure.com or email info@nahlapure.com